

Case Study for Burner Management Units at Thomas Linacre Centre, part of

Wrightington, Wigan and Leigh 
NHS Foundation Trust



The Green Consultancy Inc. Limited were engaged by Wrightington, Wigan & Leigh NHS Foundation Trust (WWL) to advise on how they could reduce the gas consumption at their hospitals.

Having successfully installed Burner Management Units at Leigh Infirmary we asked to take a look at the Thomas Linacre Centre (TLC) to see if we could do something similar there.



This technology is designed to alter the firing pattern of the boiler to improve their energy efficiency, without impairing the performance of the boilers.

The BMU's used are the only BMU's in the UK which are certified by the Building Research Establishment (BRE).

The BRE conclusion after testing the units over a number of months, the BMU demonstrated savings on a test rig to in excess of 16% of gas consumption at low loads and high economy savings factors.

The actual savings are dependent on the nature of the load, the size of the system, heat emitters and boiler in relation to the load, the type of system that the boiler is serving and the type of boiler the BMU is fitted.

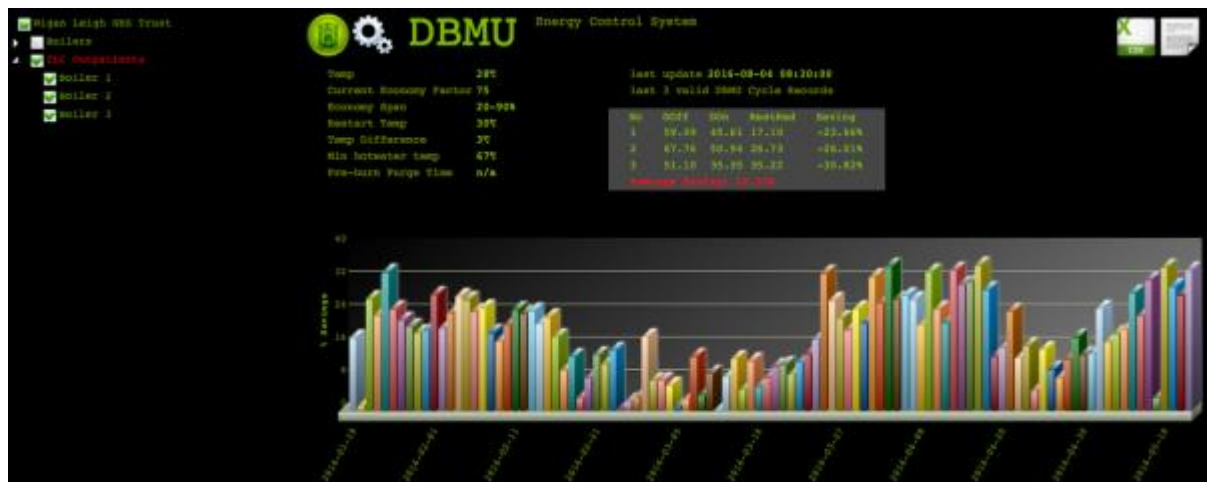
An impressive feature of the BMU's is its ability to monitor its own performance. This information can then be accessed on line using a PC, laptop, tablet or smart phone.

Thomas Linacre Centre

After the success at Leigh Infirmary the trust were keen to see if the results were a one off or whether they could be repeated at TLC.

The cost of the installation of the 3 BMU's totalled £5,700, and had an estimated return on investment of just under 10 months!

Below is a recent screen print of the monitoring on the units with the savings made to date.



As you can see, the savings the units have made thus far is actually 18.3%. This means the actual return on investment is an excellent 8.46 months.

Mark Hogan, Energy and Environment Manager at WWL said this about the Burner Management Units installed.

“Following on from the success of Leigh Infirmary we asked GCI to install the Burner Management Units at TLC hoping that we could repeat the savings made there. As we expected the units again made great savings in gas consumption, without impacting on patient care.

We have recommended these units to our neighbouring NHS Trusts as they are a great, relatively inexpensive way of reducing gas consumption with a superb return on investment.

I thoroughly recommend that these units be installed in any NHS facility as the savings they make are excellent”.